

29.5 Acres PUBLIC AUCTION

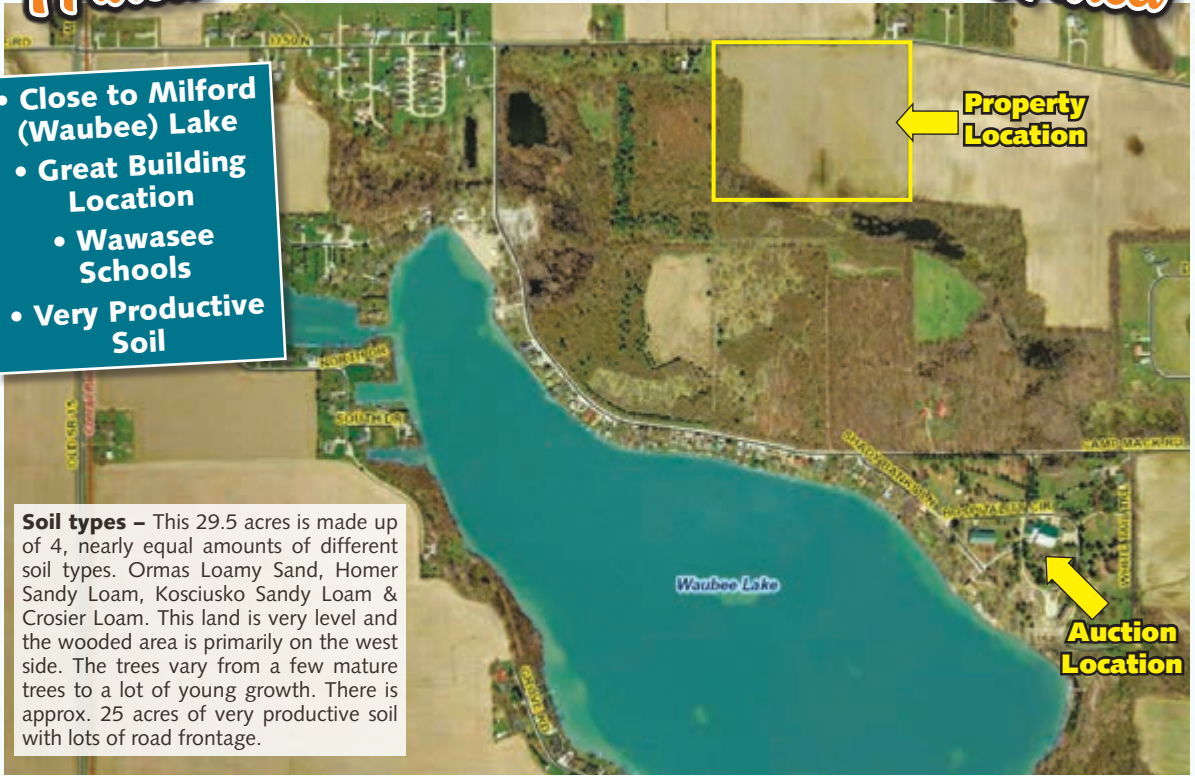
Property Location: South of Milford, IN on SR 15 1 mile to 1150 N, then east 1½ miles at approx. **721 E. 1150 N.** Watch for signs.

Auction Location: At Camp Mack which is south of Milford, IN on SR 15 1 mile to 1150 N, then east 1¼ miles to Camp Mack Road, then southeast 1 mile at **1113 E. Camp Mack Road, Milford, IN 46542.**

Thursday, February 8, 2018 • 6:00 pm

1 Parcel 29.5 ACRES (4.5 WOODED) BARE LAND 1 Parcel

- Close to Milford (Waubee) Lake
- Great Building Location
- Wawasee Schools
- Very Productive Soil



Soil types – This 29.5 acres is made up of 4, nearly equal amounts of different soil types. Ormas Loamy Sand, Homer Sandy Loam, Kosciusko Sandy Loam & Crosier Loam. This land is very level and the wooded area is primarily on the west side. The trees vary from a few mature trees to a lot of young growth. There is approx. 25 acres of very productive soil with lots of road frontage.

TERMS & CONDITIONS

DOWN PAYMENT: 10% down payment on the day of the auction with the balance in cash at closing. The down payment may be made in the form of cash, cashier's check, personal check or corporate check. Your bidding is not conditional upon financing, so be sure you have arranged financing, if needed, and are capable of paying cash at closing.

AGENCY: Hahn Auctioneers, Inc. and its representatives are Exclusive Agents of the sellers.

ACCEPTANCE OF BID PRICES: All successful bidders will be required to enter into purchase agreements at the auction site immediately following the close of the auction. All final bid prices are subject to approval by the Sellers.

AUCTIONEER NOTE: Your bidding is not conditional upon financing, so be sure you have arranged financing if needed. For more information on financing or inspection, contact Hahn Auctioneers, Inc.

Camp Alexander Mack, Inc.
Owner



HAHN
HahnAuctioneers.com

Phil Hahn - (574) 535-3783
IN Lic. #AU01012967
Brian Wuthrich
(574) 268-4940 - Milford, IN

Office (574) 773-8445
Nappanee, IN
AC39800021

Jason Hahn
(574) 536-7682
Clint Cripe
(574) 354-8006

