

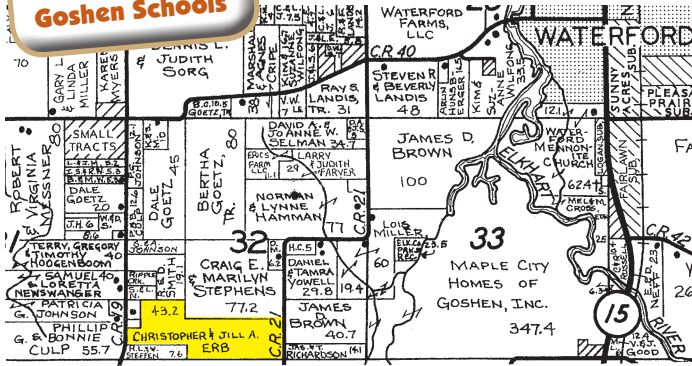
ERB LAND AUCTION

Monday, November 19, 2018 - 6:00 pm

73 ACRES

Elkhart Twp.
Goshen Schools

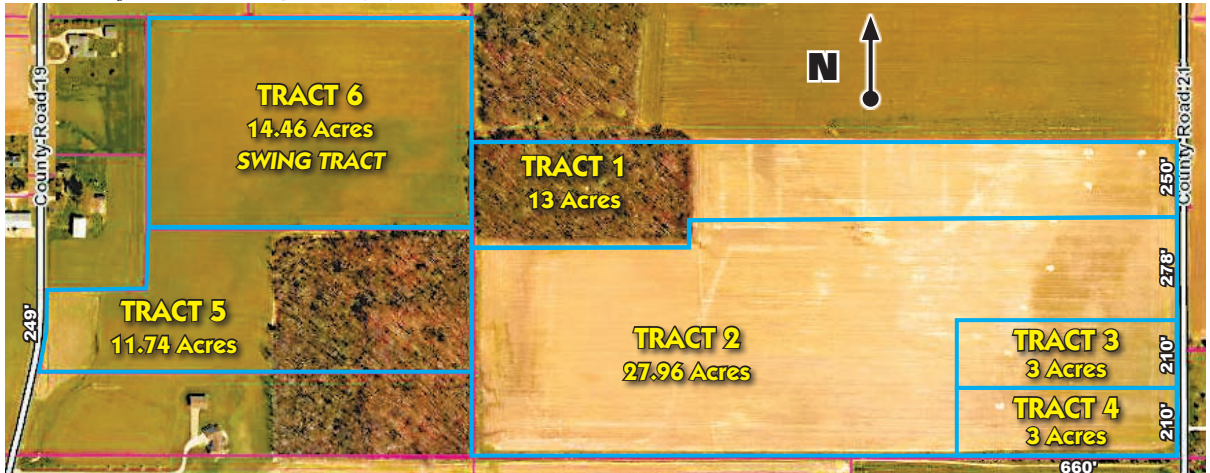
6 Tracts
2 Wooded Tracts
3 Acre Potential
Building Site
Farm Ground



Located one mile west of St. Rd. 15 in Waterford, IN on CR 40 to CR 21, then south ¾ mile for Tracts 1-4.

Take CR 40 to CR 19, then south ¾ mile for Tracts 5 & 6.

Auction held at
New Paris Missionary Church
Fellowship Building
67651 SR 15, New Paris, IN 46553



TRACT 1: 13 acres +/- with 250' of frontage on CR 21, approx. 5 acres of woods.

TRACT 2: 27.96 +/- acres. All tillable.

TRACT 3 & 4: 3 acre potential building sites, 210' x 660'

TRACT 5: 11.74 acres, 5 acres wooded.

TRACT 6: 14.46 acres all tillable. SWING TRACT.

Tracts can be bought individually or in combination.

— TERMS & CONDITIONS —

DOWN PAYMENT: 10% down payment on the day of the auction with the balance in cash at closing. The down payment may be made in the form of cash, cashier's check, personal check or corporate check. Your bidding is not conditional upon financing, so be sure you have arranged financing, if needed, and are capable of paying cash at closing.

AGENCY: Hahn Auctioneers, Inc. and its representatives are Exclusive Agents of the sellers.

ACCEPTANCE OF BID PRICES: All successful bidders will be required to enter into purchase agreements at the auction site immediately following the close of the auction. All final bid prices are subject to approval by the Sellers.

AUCTIONEER NOTE: Your bidding is not conditional upon financing, so be sure you have arranged financing if needed. For more information on financing or inspection, contact Hahn Auctioneers, Inc.

**Christopher
& Jill Erb,
Owners**



HAHN
HahnAuctioneers.com

Phil Hahn - (574) 535-3783
IN Lic. #AU01012967

Brian Wuthrich, Sale Manager
(574) 268-4940 - Milford, IN

Office (574) 773-8445
Nappanee, IN
AC39800021

Jason Hahn
(574) 536-7682

Clint Cripe
(574) 354-8006

