

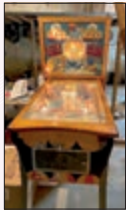
# SHREINER AUCTION

Located south of Elkhart, Ind. on St. Rd. 19 (just south of US 20 Bypass) to CR 26, then east 1 mile to CR 7, then north ¾ mile at **59414 CR 7, Elkhart, Ind. 46517.**

## Thurs., October 26, 2023 • 1:00 p.m.

*As we have bought a motor home and will be traveling, we will sell the following...*

**Outbuilding • Pinball Machine • Pool  
Chicken House • Appliances • Furniture & More**



1958 Gottlieb "Around the World" original maple finish 2-player pinball machine, works; 2023 Best Way 12x24, 52" deep, above ground pool, to be removed; Like new 10'x16' double front door small utility shed; New in 2023, approx. 6'x10' chicken cottage/hen house; Approx. 10 laying chickens and 1 Polish rooster; 25' aluminum telescoping flagpole;



Nice Weber stainless natural gas portable barbecue grill; Like new John Deere JE75 rear-bagging self-propelled mulching mower; Troy-Bilt 10 hp 2-stage 26" wide snowblower; Other misc. items in the utility - live animal traps, misc. hand tools, ornamental sleigh, clay pigeon thrower; Hayward sand pool filter, complete in good condition; Large amount of varied hardware, plumbing, electrical, etc.; Like new aluminum children's yard swing w/slide; Wheelbarrow; Yard wagon; Like new set of Ping men's golf clubs, bag and new shoes; Schwinn aluminum ladies' cruiser bicycle; (2) 1960s Schwinn bicycles; 27" SuperSport aluminum bicycle; Motorcycle jack; 8' fiberglass ladder; 16' aluminum extension ladder; Numerous and various small power tools: grinder, blower, hand tools, etc.; Varied coolers; LG side-by-side stainless steel refrigerator, freezer below; Very nice white 2-door, approx. 16 cu. ft. General Electric refrigerator; Older 1950s General Electric 1-door refrigerator; Nice set of Maytag Neptune automatic, front-loading washer and gas dryer; Various small appliances; Small kitchenware;

### Household

Solid cherry 4-leaf family-style dining table w/8 plank-bottom, rung-back chairs, 2 are captains; Solid cherry 58" wide matching 2-piece beveled glass top hutch cupboard; White KitchenAid tilt-top stand mixer; Howard Miller 34" wall pendulum clock; 4-piece Italian leather overstuffed living room pieces, 2 armchairs and love seat w/footstool, camel-color; Freestanding ornamental fireplace; Misc. end tables, sofa tables and coffee tables; Floor lights and table lights; (3) Metal bar stools w/leather seats; Varied wall hangings; Reed blanket chest; Solid cherry home office desk; Retro black 3-cushion sofa; Misc. Harley-Davidson memorabilia; Late model 5-drawer chest of drawers and matching 6-drawer dresser in weathered gray color; Visio 42" flat screen TV; Solid oak arm pool hall elevated chair; Oak arm, spindle-back rocker; Approx. 2" butcher block top dining table; Picnic table; Ozark 10'x9' pop-up tent; Varied patio and lawn furniture; Wire mesh oval patio table w/4 chairs and glider; Other misc. patio items; Chemical injection system for iron removal from irrigation; Small dog cages; (5) chrome Metro racks 4'x2' & 4-shelf; Misc. Christmas and smalls;

TERMS: Cash or Check with proper ID. Credit Card with Convenience Fee  
Any Announcements Made Day of Sale Take Precedence Over Printed Matter

## Roger & June Shreiner, Owners



# HAHN

**HahnAuctioneers.com**

Phil Hahn - (574) 535-3783  
IN Lic. #AU01012967

Jason Hahn  
(574) 536-7682



AC39800021

Brian Wuthrich  
(574) 268-4940 - Milford, IN

Office (574) 773-8445 • Nappanee, IN