

EXCAVATING EQUIPMENT AUCTION

Friday, November 3, 2023 • 12:30 p.m.

North of Warsaw, Ind. on St. Rd. 15 to 250 N (250 N is just north of US 30), then east to N. Rainbow Drive, then south to:

**2407 N Rainbow Dr.
Warsaw, IN 46582**

VAC TRUCK • DUMP TRUCKS • TRAILERS • EXCAVATOR • TRUCKS • PLOWS



- 1990 Int. model 4900, Aqua Tech model B-10 vacuum truck, automatic transmission, 40,075 miles
- 1999 International model 2554 tandem axle camel vacuum truck, 54k miles
- 1988 Bobco 24' steel dump trailer
- 1990 Hudson 20-ton tilt trailer, tandem axle, air brakes
- 2005 Eager Beaver flatbed trailer, 28' w/beaver tail and ramps
- 1998 18' tandem axle Cronkhite trailer, low profile w/ramps
- 2000 Hudson, tandem axle 28' tilt trailer, new deck, 20-ton
- 1998 International model 4300 single axle dump truck, 10' bed, 12-spd trans., 319k miles

- 1988 Kenworth tandem axle dump truck, 15' bed w/tarp, CAT 4.25 diesel engine, 290k miles
- 1988 Kenworth T800 tri-axle dump truck w/18' aluminum bed, tarp and CAT 4.25 engine
- 1985 single axle dump truck model 1950 w/DT 466 engine, 10' steel bed
- 1993 International series 2674 tri-axle dump truck w/16' steel bed and 560k miles
- 1,000-gallon poly water tank on tandem axle trailer w/pump and Honda 5.5 hp engine
- Komatsu PC 60 Advance excavator w/30" wide bucket, 5,300 hours
- (5) varied size excavator buckets
- Bobcat Sweepster w/universal attachment electric over hydraulic
- (2) 500-gallon fuel diesel tanks, no pumps
- Older Warner Swasey tractor forklift, does run

- 3 pt. PTO salt spreader
- 1999 Chevy 2500 service truck w/air compressor, work boxes, 8' service bed, gas engine & 209k miles
- 2002 Ford F250 Super Duty w/gas engine, 4WD, 145k miles, cab and half w/8' bed, some rust
- 2012 Chevy 2500 HD crew cab, leather interiors, 6.2-liter gas engine w/168k miles, 4-wheel drive w/ 6' bed, Z71 package
- Western 9' snowplow blade w/lights, like new
- 8' Super Duty Boss blade w/lights, came off the Chevy 2500
- Little Wonder leaf blower
- Leaf vac
- Skid of 14' long, 10" wide, 2" thick, rough sawn hickory boards
- John Deere 3320 utility tractor, 1,714 hrs. with turf tires, loader and mower deck
- Steel City floor model table saw w/fence
- Cat engine and engine parts
- Computer for a C14
- Large brass plumbing valves
- Rolls of up to 1" cable
- Aluminum truck boxes



- Vinyl and steel siding
- Knaack Jobmaster chest on casters
- Old cast iron safe

NOTE: This is excess equipment and Carey Excavation and Trucking will continue operation.

Bid Online at **proxibid**

— **PERSONAL PROPERTY TERMS** —

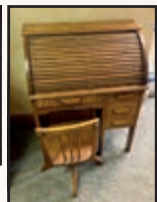
Cash or Check with proper ID.
Credit Card with Convenience Fee

5% BUYER'S PREMIUM

Any Announcements Made Day of Sale
Take Precedence Over Printed Matter

LARGE BRASS BELL • BEAUTIFUL OAK ANTIQUE FURNITURE

- Excellent 36" tall brass bell with cast iron yolk, Hy. Stukst-edde Bell Company, St. Louis, MO 1915, believed to have come out of a catholic church
- Beautiful oak kitchen cabinet w/flour bin and cutting board
- Approx. 7' tall oak sliding glass door bookcase
- Damascus treadle sewing machine w/oak cabinet
- 6' tall double door oak bookcase
- Oak curved glass secretary
- Beautiful oak buffet, approx. 5' tall x 40" wide w/ beveled glass mirror and curved glass door
- Oak approx. 36" wide bench



- Large oak, mirrored glass cabinet w/side door bookcase
- 6.5' tall, oak, beveled mirrored hall tree
- Approx. 48" oak bench
- Approx. 42" tall oak preacher's stand
- Oak coffee table
- Oak Ansonia wall hung wind up clock
- Oak desks and small antique oak desk
- Edison antique floor-model record player

Carey Excavation and Trucking Incorporated



HAHN

HahnAuctioneers.com

Phil Hahn
(574) 535-3783
IN Lic. #AU01012967

Jason Hahn
(574) 536-7682

Office (574) 773-8445 • Nappanee, IN



AC39800021

Brian Wuthrich
Sale Manager
(574) 268-4940 - Milford, IN