

REAL ESTATE AUCTION

Property Location: North of New Paris, IN on SR 15 to CR 142, then west 1 mile to CR 21, then north 1 mile to **66529 CR 21, Goshen, IN 46526**

Auction Location: **Ramer Mennonite Youth Center (RMYC)**
24717 CR 44, Nappanee, IN 46550

Tuesday, November 21st, 2023

Starting at 5:00 p.m.

6 Acre Country Property – Elkhart Twp.
2,000 Sq. Ft. Home with 5 Bedrooms

This house is across the road from the Showalter Investment land auction and will be offered before the Land Auction.

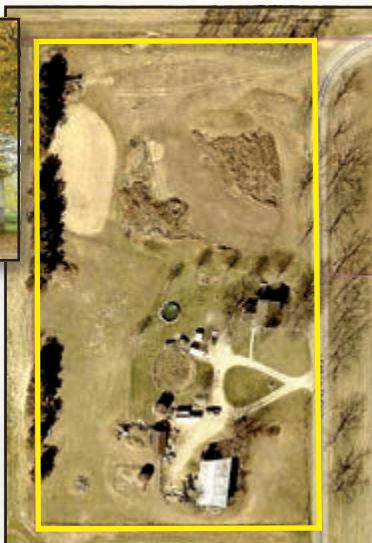
Preview
Monday,
October 30
4-6 pm



— General Information —

This is a large, 1,928 sq. ft. home with 5 bedrooms, 1 bathroom and spacious kitchen/living area. The 4" well and the steel roof on the house are recently updated. The house overall is in need of some fixing up.

The outbuildings and grain bin are in need of repairs, but the 6 acres of land offer enormous potential for improvements.



REAL ESTATE TERMS & CONDITIONS

DOWN PAYMENT: 5% down payment on the day of the auction with the balance in cash at closing. The down payment may be made in the form of cash, cashier's check, personal check or corporate check. Your bidding is not conditional upon financing, so be sure you have arranged financing, if needed, and are capable of paying cash at closing.

Any announcements made day of the sale take precedence over printed matter.

ACCEPTANCE OF BID PRICES: All successful bidders will be required to enter into purchase agreements at the auction site immediately following the close of the auction. All final bid prices are subject to approval by the Sellers.

AUCTIONEER NOTE: Your bidding is not conditional upon financing, so be sure you have arranged financing if needed. For more information on financing or inspection, contact Hahn Auctioneers, Inc.

Dwight D. Miller Estate • Jan Miller, Owner



HAHN

HahnAuctioneers.com

Phil Hahn

(574) 535-3783

IN Lic. #AU01012967

Jason Hahn

Sale Manager

(574) 536-7682



AC39800021

Brian Wuthrich

(574) 268-4940

Milford, IN

Office (574) 773-8445 • Nappanee, IN