

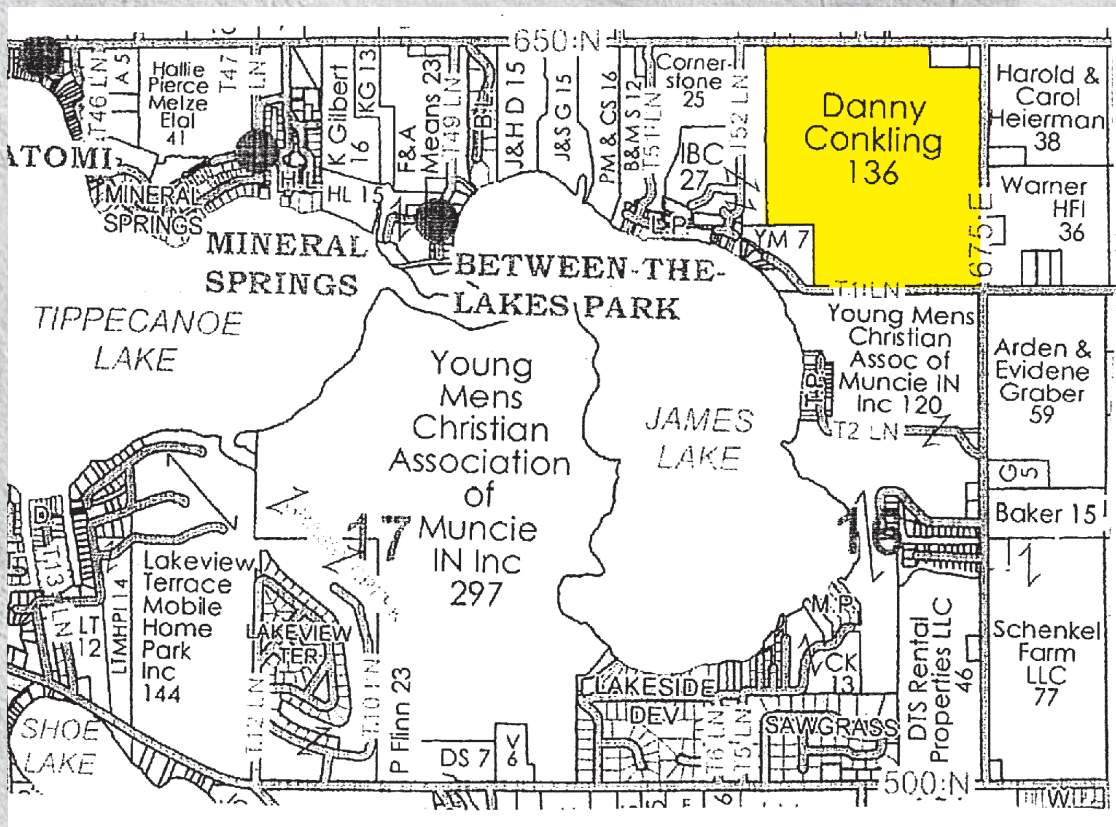
# Conkling LAND AUCTION

**FARMLAND LOCATION:** West of St. Rd. 13 in North Webster, Indiana on 650 N to 675 E. Watch for signs.

**AUCTION LOCATION:** North Webster Community Center - 301 N. Main St., North Webster, Ind. 46555

## Tuesday, January 9, 2024

### Land Auction • 6:00 p.m.



# 132.86 Acres

**Tippecanoe Twp.  
Kosciusko County**

## 6 Parcels

**(2) 5 Acre  
Wooded Tracts**

**10 Acres  
Partially Wooded**

**7.5, 40 and 65 Acre  
Tillable Tracts**



# HAHN

**HahnAuctioneers.com**

Phil Hahn  
(574) 535-3783  
IN Lic. #AU01012967

Jason Hahn  
(574) 536-7682

Office (574) 773-8445 • Nappanee, IN



AC39800021

Brian Wutrich  
Sale Manager  
(574) 268-4940 - Milford, IN

*Danny Conkling*  
**ESTATE**

## LAND INFORMATION

**TRACT 1:** 40 Acres all tillable with road frontage on 650 N.

**TRACT 2:** 5 Acres all wooded. Potential building site with road frontage on 650 N.

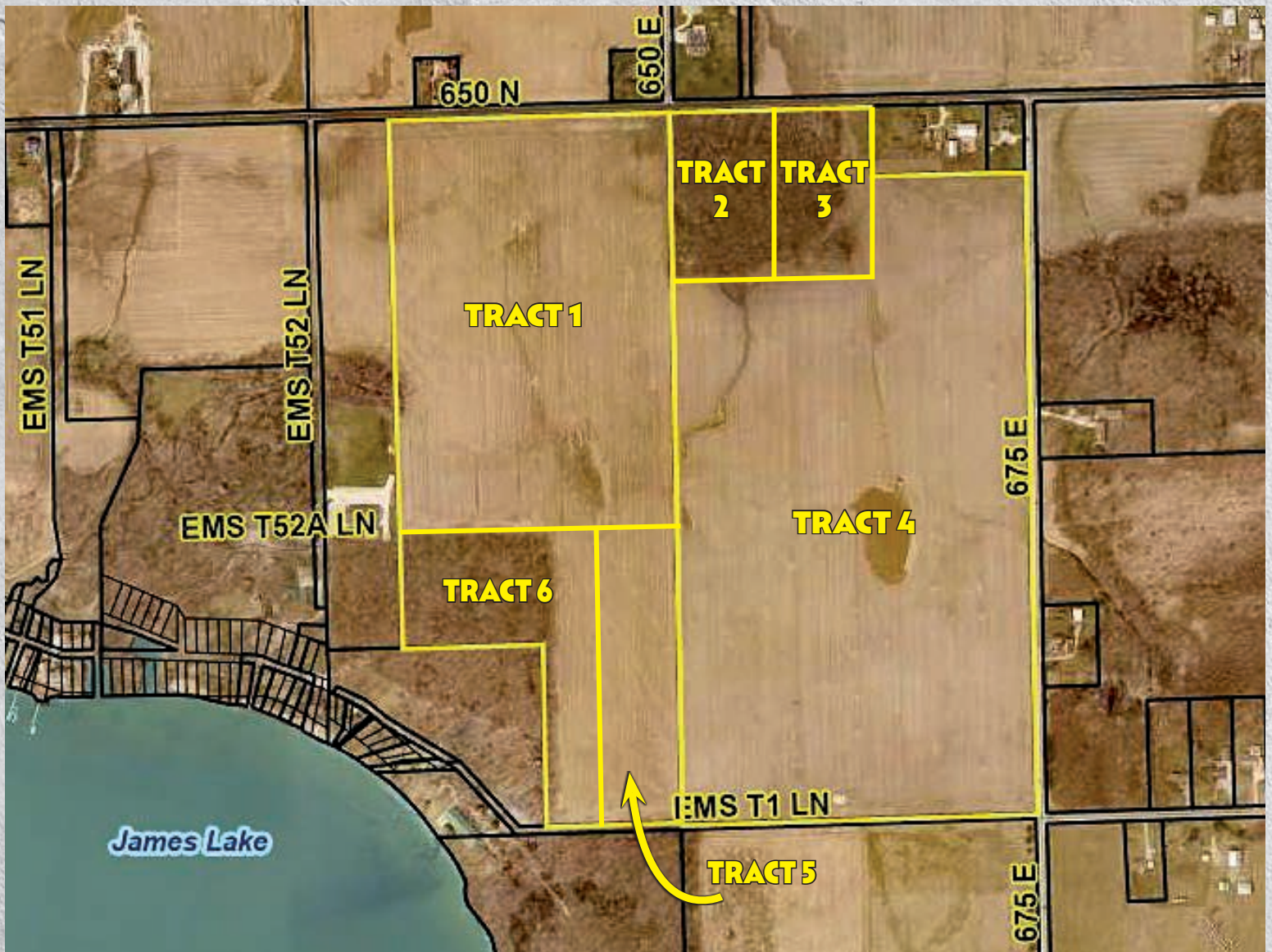
**TRACT 3:** 5 Acres all wooded. Potential building site with road frontage on 650 N.

**TRACT 4:** 65.3 Acres all tillable with road frontage on 675 E and EMS T1 Ln.

**TRACT 5:** 7.5 Acres all tillable. Potential building site with approx. 300' of road frontage on EMS T1 Ln.

**TRACT 6:** 10 Acres with approx. 6 acres wooded and approx. 200' of road frontage on EMS T1 Ln.  
Potential building site.

**BID ON ONE TRACT, MULTIPLE TRACTS, OR THE ENTIRETY!**



This property is being offered without any guarantee of specific zoning or issuance of building permits and health department permits for septic systems and water wells on any parcel. Also, present fence lines are not relevant to the final, newly surveyed lines. The artist rendering of the lines is approximate and for visual inspection only.



## HAHN AUCTIONEERS, INC.

1203 E. Market St.  
Nappanee, IN 46550

**132.86**  
**Acres**

### TERMS and CONDITIONS

**PROCEDURE:** The property will be offered in 6 parcels. There will be open bidding on most tracts during the auction as determined by the Auctioneer. Bids on tracts and the total property may compete. The property will be sold in the manner resulting in the highest total sale price, subject to confirmation of the sellers. ***Can't make the auction in person? Call us and bid by phone!***

**DOWN PAYMENT: 10% down payment** on the day of the auction with the balance in cash at closing. The down payment may be made in the form of cash, cashier's check, personal check or corporate check. Your bidding is not conditional upon financing, so be sure you have arranged financing, if needed, and are capable of paying cash at closing.

**ACCEPTANCE OF BID PRICES:** All successful bidders will be required to enter into purchase agreements at the auction site immediately following the close of the auction. All final bid prices are subject to approval by the Sellers.

**EVIDENCE OF TITLE:** Seller shall provide an Owner's Title Insurance policy in the amount of the purchase price.

**DEED:** Sellers shall provide Warranty Deed(s).

**CLOSING:** The balance of the purchase price is due at closing approximately 35 days after presentation of marketable title. **Approximately February 15, 2024.**

**ACREAGE:** All tract acreages, dimensions and proposed boundaries are approximate and have been estimated based on current legal descriptions and/or aerial photos.

**SURVEY:** Split 50/50 between buyer and seller.

**POSSESSION:** Available at end of the 2023 crop year.

**EASEMENTS:** Sale of the property is subject to any and all easements of record.

**AGENCY:** Hahn Auctioneers, Inc. and its representatives are Exclusive Agents of the sellers.

**DISCLAIMER AND ABSENCE OF WARRANTIES:** All information contained in this brochure and all related materials are subject to the Terms and Conditions outlined in the Purchase Agreement. Announcements made at the auction podium during the time of the sale will take precedence over any previously printed material, or any other oral statements made. The property is being sold on an "AS IS, WHERE IS" basis, and no warranty or representation, either expressed or implied, concerning the property is made by the seller or the auction company. All sketches and dimensions in the brochure are approximate. Each potential buyer is responsible for conducting his/her own independent inspections, investigations, inquiries and due diligence concerning the property. The information contained in this brochure is subject to verification by all parties relying on it. No liability for its accuracy, errors or omissions is assumed by the seller or the auction company. Conduct of the auction and increments of bidding are at the direction and discretion of the auctioneer. The seller and selling agents reserve the right to preclude any person from bidding if there is any question as to such person's credentials. All decisions of the auctioneer are final.

**ANY ANNOUNCEMENTS MADE THE DAY OF THE SALE TAKE PRECEDENCE OVER PRINTED MATERIAL OR ANY OTHER ORAL STATEMENTS MADE.**

**AUCTIONEER NOTE:** Your bidding is not conditional upon financing, so be sure you have arranged financing if needed. For more information on financing or inspection, contact Hahn Auctioneers, Inc.