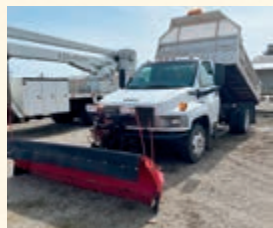


Landscaping EQUIPMENT AUCTION

Thursday, April 25, 2024 • 10:00 AM

North of South Bend, Indiana
on SR 933 to Perley St. (Big C
Lumber), then west 1 block to

215 Ullery St.
South Bend, Ind. 46637
*Approximately ½ mile
north of Douglas Road.*



2004 Chevy C4500 w/Duramax Diesel Engine, Dual Single Axle w/10' Bed Steel and Landscape Sides, 91,272 Miles, Automatic Transmission, 10' Western Ultra Mount Pro Plus Heavy Hitter w/Weights; 2000 Boom Truck w/85' Boom Side Tool Boxes, Down Riggers, Single Axle, 74,388 Miles w/International 4800DT 466E Truck; 2008 Chevy 2500HD w/Vortex 6.0 Liter Gas Engine, 204k Miles, 9' Diamond Plate Bed w/Removable Sides and Hoist; 2004 Chevy C4500 w/Duramax Diesel Engine, Auto Transmission, 144,700 Milew/11' Enclosed Bed Mulching Truck; 2007 Chevy 2500 HD 4WD, Gas Engine, Auto Transmission, 102k Miles w/Work Box Bed; 2004 Chevy 2500 HD 4WD Pickup, 198k Miles, Cab and a Half w/6.5' Bed; 2000 Ford F-550 XL Super Duty Boom Truck, 4WD, 35' Boom w/ 234k Miles, 7.3 Diesel Engine; 2017 16' Tech Works Sure-Trac Dump Trailer, Tandem Axle w/Wood Side Extensions and Roll Cart w/Pintle Hitch; 2003 Chevy 2500HD 4WD Pickup, Cab and a Half w/6.5' Bed, Mileage N/A; Western Wideout Ultra Finished 8' to 10' Wide w/Extendable Wings, All With Lights; Western 8' Pro Plus w/Weights; (2) Salt Spreaders, One Late Model Tornado Yard and a Half Salt Spreader for the Back of a Truck and Fisher Salt Spreader w/New Belt; 2014 Bobcat T550 Skid Loader w/2777 hours, Sold with Materials Bucket; Vermeer Model S600TX Diesel Stand On Skid Loader, 2174 Hours, Sold with Materials Bucket; Bobcat Model 328 Mini Excavator, 2999 Hours, 24' Materials Bucket and Front Blade; 2014 Sure-Trac Landscape Flat Bed Low-Profile Trailer, Tandem Axle w/Drop Mesh Tailgate Split; Large Vermeer Stump Grinder w/24" Stump Grinding Blade, Diesel Engine On Trailer, Model 665B; Toyota Model GC20 4000 lb. LP Gas Forklift On Pneumatic Rubber w/Side Shift, 169" Lift, Overall Height Is Approximately 6.5'; Scag Cheetah Zero-Turn 61" Lawn Mower w/Rear Bagger, 901 Hours, Electronic Fuel Injection; Exmark 60" Zero-Turn Lawn Mower, 1554 Hours, Fuel Injected Engine; Wright Stander Model W552 17 hp Kawasaki Engine; Quiet Blow 9 hp Leaf Blower Attached to the Front; Rolls of 6 & 8' Chain Link Fence and Turn Poles; Toro Power Clear 418ZR Gas-Powered Snowblower; Toro CZR 2450 Gas-Powered Snowblower; Portable Air Compressor w/32,015 Hours w/Ford V8 Engine; Craftsman Walk-Behind 24" Snowblower; Troy-Bilt Walk-Behind 24" Snowblower; 60 Gallon Pull-Behind Sprayer w/8' Booms and Pump; (2) Kangaroo Stoppers Model MT-75HS; Gas-Powered Jack Hammer; 4-Cylinder Ford Power Unit Only; Toro 21" Professional Pace Lawn Mower; Little Wonder Optimax 9 hp Walk-Behind Leaf Blower; Mini Consaw Walk-Behind Concrete Saw w/8 hp Honda Engine; Wen Gas-Powered Concrete Packer; Mikasa

Walk-Behind Concrete Tamper; Irrigation Parts; Misc. Hand Tools; Fiberglass and Aluminum Extension Ladders Including 300 lb. 28' Extension Ladder; Large Amount of Varied Truck and Trailer Tires, Many On Rims; (8) 4x8 Plastic Drive-On Yard Mats; Toro Time Master Twin Blade 30" Wide Professional Pace Self-Propelled Lawn Mower; Exmark 60" Zero-Turn Lawn Mower w/Bagger, 1495 Hours; (2) Universal Fork Bucket Attachments w/42" Forks; Bobcat Brand 60" Double Cylinder Clamp Bucket; Varied Construction Cones Barrels and Signs; Very Nice Vermeer Vibratory Plow, Universal Attachment, Set Up To Go On Dingo But Large Universal Attachment Included; 30" Wide Dual Barrel Steam Yard Roller; (2) Rear-Tine Rototillers; Small Yard Chipper/Shredder; Fork Attachments w/42" Forks for Stand on Vermeer; (8) Varied Size Buckets for Vermeer; Claas, Toro Dingo, Ditch Witch 48"; Nice 100-Gallon Diesel Fuel Truck Tank w/12v Fill Right Pump; (2) Concrete Wet Saws for Block or Pavers; Lethco Commercial Walk-Behind Power Seeder Renovator Model 20 w/Kawasaki Gas Engine; Bluebird Walk-Behind Aerator; 7' Wide Forklift Trash Dumpster; Large Amount of Tools; Crescent Wrenches; Organizers; US General 5' Tall Rolling Toolbox; Socket Sets; Pliers; Vise Grips; Impact Sockets; Varied Tool Sets out of Back of Trucks; Nut and Bolt Organizers; Large Amount of Varied Parts; Lincoln 225 Welder; Milwaukee Screw Guns; Impacts; Flashlights w/Chargers; Skill Saw; Sawzall and Etc.; Chains; Chain Binders; Large C-clamps; Allis TC-229 Tire Machine; Acetylene Torch Set; Continental 30-Ton Capacity Shop Floor Model Press; Electric Winch; Floor Jacks; Honda 5000x Generator w/11 hp Honda Engine; (3) Stihl Model 700 Backpack Blowers; Stihl TS400 Gas-Powered Masonry Saw; Stihl MS6611C w/30" Bar Magnum Chainsaw; Stihl MS462C Chainsaw w/24" Bar; (2) Stihl Chainsaws w/12" Bars; Stihl Model 201T w/18" Bar; Husqvarna Chainsaw; Stihl Edge Trimmer; Stihl Battery Hedge Trimmer; (2) Stihl Battery-Powered Chain Saw, One w/8" Bar and One w/10" Bar Model MSA160C; Lincoln Weld-Pak 100 Wire Welder

*Total Property
Maintenance*

215 Ullery St. • South Bend, IN 46637



HAHN
HahnAuctioneers.com

Phil Hahn
(574) 535-3783
IN Lic. #AU01012967

Jason Hahn
(574) 536-7682

Office (574) 773-8445 • Nappanee, IN



AC39800021

Brian Wuthrich
Sale Manager
(574) 268-4940 - Milford, IN

Live Online
Bidding

Powered By:
proxibid

TERMS: Cash or Check with proper
ID. Credit Card with Convenience Fee
10% Buyer's Premium

**Any Announcements Made Day of Sale
Take Precedence Over Printed Matter**