



AUCTION

Intersection of St. Rd. 5 and U.S. 20, Shipshewana, Ind.

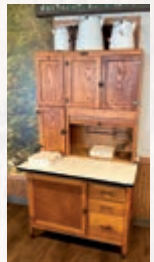
Monday, July 8, 2024 • 10:00 am

Complete Liquidation!

After 35 Years of Business We Are Closing. Everything Must Go!



Cummins Diesel Generator w/807 Hours 55kw; (4) Trane and American Standard Heating and Cooling Units, One is a 5-Ton Conditioning Unit Only; Fujitsu Mini Split Unit; Henny Penny Chicken Breeding Station; Late Model Henny Penny Velocity Series Deep Fryer; South Bend Double Oven SL Series; South Bend 6-Burner Gas Range w/Oven; Pitco Frialator; Deep Vat Fryers; (2) Nice 48" Flattop Griddles On Carts w/Cutting Boards; Hoshizaki Double Doored w/Flip Top Refrigerated Work Station; Double Doored True Stainless Steel Refrigerator; Henny Penny HC900 Heated Holding Cabinet; Hoszki Commercial Double Doored Fridge On Casters; (2) 4-Drawer File Cabinets; 3 ph Condensor for Walk-In Freezer Model CHT040X-6CFM, 5 Yrs. Old; Heat Craft Condensor for Walk-In Cooler Model CHT015X6CFM; AO Smith Cyclone MXI Modulating Large-Capacity Water Heater Gas Model BTH199200; True Single Door Refrigerator 26x72; Stainless Steel Corner Work Station; Hoshizaki Model KM1200SRE Large Ice Maker In Working Condition; Acutemp Evolution Boiler Free Steamer; (2) Alto-Shahm Warmer On Casters; Deerfield Double Door Stainless Steel Refrigerator; E Series Water Softener; Paper Towel Dispenser; Knife Holders; 74" Triple Sink; Large Workbench w/Cutting Board; South Bend 6-Burner Stove and Oven; South Bend Double Doored Refrigerator; Silver Star Oven; Stainless Steel Shelves; 10' Long Ancil System; (2) 11.5' Long Ancil Systems Presently Connected; 28x30 Stainless Steel Sink; (10) Cambro Catering Containers; Rolling Mop Buckets; 92" Long Triple Sink w/Work Area; Foot Pedal Hand Wash Stainless Steel Sink; Hobart Model A200 Bench-Top Mixer; Central Line Electric Meat Slicer; (2) 8' Long Stainless Steel Tables; Large Flour Bins; Kelvinator 80" Ice Cream Freezer; Global Ice Cream Freezer 67"; Very Nice Oak 45" Wide Booths; Black Cushion Round Back Stackable Chairs; Ceiling Fans; Rolling Plastic Carts; Plastic Dunnage Containers; Large Amount of Varied Size Stainless Steel Pans; Hobart Automatic Dishwasher; Double Vat Sink; (2) 8' Long Stainless Steel Prep Tables w/Electric; Large Amount of Large Pans, Cookie Sheets, Strainers; Large Amount of Varied Utensils; Very Nice 36" Pedestal Tables; 36x72 Tables; (2) Polywood Benches; Metal Outdoor Large Trash Can; (5) Arrowhead Display Cases w/Varied Sized Arrowheads; 4' Metro-Style Racks Mainly On Casters; Catering Items; Coffee Holder; Igloo Coolers; Berkel Electric Meat Slicer; (75) Varied Sized Copper Teapots; Solid Oak Bookshelves; Oak Cookie or Bread Display Rack; Very Nice Curved Glass Display Case; 36" Display Case; Waterless Soup Warmers; Salad Bar and Buffet Counter; Sinks, Urinals and Stools In Restrooms; Coin Drop Scales Porcelain made by Peerless Weight Machine Company; We Also Have Freezer and Cooler Doors; 24" Cannon On Spoked-Wheeled Cart; (2) Antique Childs High Chairs; Childs or Doll-Size Covered Wagon; Circus Carriage with (2) Bears and Elephant; 54" Long Sleigh; Coppes Antique Kitchen Cabinet w/Flour Bin & Porcelain Top; Oak Step Back Cabinets; Cavalier Oak 48" Ice Box; Home Comfort Antique Stove; Oak Hall Tree; 8' White Banquet Tables; Antique Hoosier Kitchen Cabinet; Antique Pieces Including Cast Iron Teapot; Antique Hand-Crank Butter Churn; KitchenMaid Oak Kitchen Cabinet;



5 & 20 Restaurant, Owner

HAHN

HahnAuctioneers.com

Phil Hahn
(574) 535-3783

Jason Hahn
(574) 536-7682

IN Lic. #AU01012967

Office (574) 773-8445 • Nappanee, IN



AC39800021

Brian Wuthrich
Sale Manager

(574) 268-4940 - Milford, IN

NOTE: This building will be torn down. We can sell this down to the bare walls.

Terms: Cash or Check w/proper ID
Credit Card with Convenience Fee

10% Buyer's Premium

Any Announcements Made
Day of Sale Take Precedence
Over Printed Matter

