

LIVE AUCTION ONLY!

Electrical Company Closeout

PUBLIC AUCTION

Tuesday, May 12, 2026 • 9:00 am

Located approx. 2 miles east of downtown Mishawaka, Ind. on St. Rd. 933 (Lincolnway) to St. Rd. 331 (Capital), then south approx. 1½ miles on St. Rd. 331 to Ireland, then west ½ block to Elm Circle, then south at

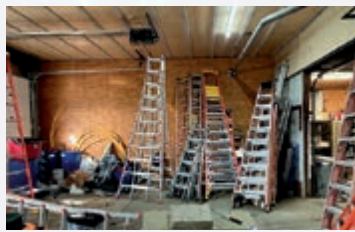
**59851 Elm Circle
Mishawaka, Ind. 46544**

**5 TRUCKS • TRAILERS • 2 FORKLIFTS
EMBROIDERY MACHINE • ELECTRICAL EQUIPMENT
SUPPLIES • SUPPORT ITEMS • LARGE AMOUNT OF
INVENTORY - BOXES, WIRE, BREAKERS, PANELS &
SO MUCH MORE • OFFICE ITEMS • FILES & MORE!**

**INSPECTION
MONDAY, MAY 11
NOON -3PM**



2015 Nissan Frontier Pickup Truck, 180,300 miles; 2013 Dodge 4x4 Pickup Truck, 165k miles, runs rough; 2013 Ford E-250 Van w/ interior bins; 2012 Ford E-250 Van, 150k miles, runs, complete with industrial racks; Varied industrial racks taken out of other trucks; 2012 Chevrolet Express G-2500 Van, 195,500 miles; 1947 Willys Jeep Pickup Truck in initial start of restoration, no engine, no transmission, no title, grill and hood included;



Kubota battery-operated approx. 4,000 lb. forklift, 3-stage mast, w/charger, runs great; Clark LP gas 2-stage approx. 5,000 lb. cushion-tired forklift, shows 3328 hrs.; Caterpillar 5,000 lb. LP gas forklift, side shift, hard tired, clean; Stealth Titan 15' V-nose single axle cargo trailer with ramp doors, 2016; Non-titled tandem axle 13' ramp x 4' wide trailer for scissor lift and wire racking, total length 18'; 16' flatbed dual-axle trailer, title, w/Gorilla lift mesh ramp and 12" sides; Thima model TMEX-C1501 single head approximate 15-color embroidery machine, was working with flash drive, with hat hoop; US Cutter model MH721-MK2 vinyl cutter 24" friction feed machine; Varied rolls and colors of vinyl; Varied rolls and colors of thread; Greenlee 3 or 4 inch hydraulic bender in rolling case; Greenlee hydraulic bender 1.25-2" in box; Greenlee tugger wire puller; Greenlee stands; Greenlee PVC bender up to 4"; Numerous Milwaukee and DeWalt battery-operated hand tools; Large amount of Milwaukee right angle electric drills and DeWalt; large amount of other varied electrical tools; Hilti hammer drill; Ideal tracer kit; Rigid model 535 power threader for rigid pipe .5-2"; Generac and Honda generators in that 2000 era; Hand benders; All types of shovels, diggers, picks, etc.; Varied kerosene salamander bullet heaters; Varied rolls of aluminum wiring quadruplex, some up to 1500' rolls; Varied large spool forklift-movable wire racks; Varied tech ray surfaces; New in box CT600 CT cabinets; Varied lights, some LED, new in box; New in box 100 amp transfer switches; Plastic and fiber nail on boxes; Large amount of varied used breakers; Hitachi light duty contractors table saw; Used LED parking lights; A lot of partial rolls of small, thin copper wire; Huge amount of breakers, well over a 1000, some are new and some are used all different brands; Numerous and various PVC fittings; (3) Generac and Briggs and Stratton stationary whole house generators that do not run; Lots of varied temporary lights; Varied Shop Vacs; Fire extinguishers; First-aid kits; Varied pieces of new Schedule 80 PVC; Rigid pipe Schedule 40 PVC and EMT; Fiberglass extension ladders; 10' fiberglass step ladders on down to 4'; Adjustable winter dolly; Portable wire rack; Varied canopies; 1000 watt metal halide lights; Numerous and various tear-drop type shelving; Approx. 100' like new (14 total uprights - six 14' and eight 16') rack shelving w/approx. 60 arms; Approx. 15-year-old paper dollar feed pop machine; Numerous and various office desks, many chairs, many stackable chairs, folding 8' banquet tables, any other small support tables and pieces you'd need to run an office; Numerous and various lateral 3-drawer files; Lateral 2-drawer files; Fireproof 4-drawer files; Filing pieces; Hewlett-Packard color copier, PageWide Pro MFP 477; Misc. office supplies; (8) chair oak conference table; Lots of supplies and equipment not listed to keep an electrical supply company going.

Owner: Weaver Electric

HAHN

hahnrealtyandauction.com

AC39800021

Phil Hahn - (574) 535-3783
IN Lic. #AU01012967

Jason Hahn
(574) 536-7682

Brian Wutrich
(574) 268-4940 - Milford, IN

Office (574) 773-8445 • Nappanee, IN

**CAN'T MAKE
THE SALE?
BID BY PHONE!**

— Terms —

Cash or Good Check w/Proper ID
Credit Card w/Convenience Fee

**10% Buyer's Premium
In Effect**

Any Announcements Made Day
of Sale Take Precedence
Over Printed Matter

